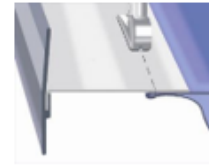
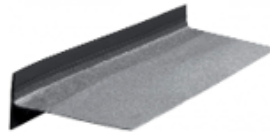


Ürün Kodu / Product Code
27856-046 & 4370-034 & 3694

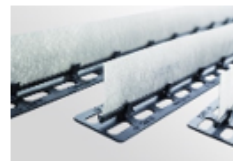


27856-046 AMBALAJ BİLGİLERİ / PACKING INFORMATION		4370-034 AMBALAJ BİLGİLERİ / PACKING INFORMATION	
AMBALAJ BİRİMİ / PACKAGING UNIT	ADET / PCS	AMBALAJ BİRİMİ / PACKAGING UNIT	ADET / PCS
AMBALAJ MİKTARI / PACKAGING QUANTITY	75	AMBALAJ MİKTARI / PACKAGING QUANTITY	40
PAKETLEME ŞEKLİ / PACKAGING TYPE	KOLİ / BOX	PAKETLEME ŞEKLİ / PACKAGING TYPE	KOLİ / BOX
3694-000 AMBALAJ BİLGİLERİ / PACKING INFORMATION		3694-996 AMBALAJ BİLGİLERİ / PACKING INFORMATION	
AMBALAJ BİRİMİ / PACKAGING UNIT	ADET / PCS	AMBALAJ BİRİMİ / PACKAGING UNIT	METRE / MTR
AMBALAJ MİKTARI / PACKAGING QUANTITY	250	AMBALAJ MİKTARI / PACKAGING QUANTITY	500
PAKETLEME ŞEKLİ / PACKAGING TYPE	KOLİ / BOX	PAKETLEME ŞEKLİ / PACKAGING TYPE	TOP / ROLL



NO.	NEW NO.	DESCRIPTION	L X B X H	FLANGE	REQUEST	MATERIAL	COLOUR	PU	PQ
2785		just set across, without counter-bar	** x 40.00 x 2.0 mm	*	X	PP	●	req	1 EP - 20 car
2785-948		just set across, without counter-bar	on rolls x 40.00 x 2.0 mm	45.0	X	PP	●	req	1 EP - 20 car
2785-048	27856-048	just set across, without counter-bar	1,200 x 40.00 x 2.0 mm	45.0	X	PP	●	req	1 EP - 20 car
2785-063	27856-063	just set across, without counter-bar	1,200 x 40.00 x 2.0 mm	63.0	X	PP	●	req	1 EP - 20 rfs
2785-073	27856-073	just set across, without counter-bar	on rolls x 40.00 x 2.0 mm	73.0	X	PP	●	req	1 EP - 20 car
2785-074	27856-0481	just set across, without counter-bar	1,200 x 40.00 x 2.0 mm	73.0	X	PP	●	req	1 EP - 20 car
2785-093	27856-093	just set across, without counter-bar	1,200 x 40.00 x 2.0 mm	93.0	X	PP	●	req	1 EP - 20 car
2785-099	27856-099	just set across, without counter-bar	on rolls x 40.00 x 2.0 mm	93.0	X	PP	●	req	1 EP - 20 rfs
2785-113	27856-113	just set across, without counter-bar	on rolls x 40.00 x 2.0 mm	113.0	X	PP	●	req	1 EP - 20 rfs
2785-114	27856-114	just set across, without counter-bar	1,200 x 40.00 x 2.0 mm	113.0	X	PP	●	req	1 EP - 20 car
2785-132	27856-132	just set across, without counter-bar	on rolls x 40.00 x 2.0 mm	133.0	X	PP	●	req	1 EP - 20 rfs
2785-133	27856-133	just set across, without counter-bar	1,200 x 40.00 x 2.0 mm	133.0	X	PP	●	req	1 EP - 20 car

*Special fleece width on request/ Spezielle Vliesbreite auf Anfrage; ** Fix lengths on request/ Fixlängen auf Anfrage



NO.	NEW NO.	DESCRIPTION	L X B X H	FLANGE	REQUEST	MATERIAL	COLOUR	PU	PQ
4370-032		short, distance: 80 mm	400 x 46.00 x 13.6 mm		X	PP	●	req	1 EP - 20 car
4370-033		long, distance: 80 mm	800 x 46.00 x 13.6 mm		X	PP	●	req	1 EP - 20 car
4370-034		extra long, distance: 80 mm	1200 x 46.00 x 13.6 mm		X	PP	●	req	1 EP - 20 car



NO.	NEW NO.	DESCRIPTION	L X B X H	FLANGE	REQUEST	MATERIAL	COLOUR	PU	PQ
3694		anchor rod, Ø 5.5x6.6 mm	** x 6.6 x 5.5 mm	*	X	PP	●	req	1 EP- 20 car
3694-000		anchor rod, Ø 5.5x6.6 mm	1,200 x 6.6 x 5.5 mm	15.0	X	PP	●	req	1 EP- 20 car
3694-001		anchor rod, Ø 5.5x6.6 mm	1,200 x 6.6 x 5.5 mm	20.0	X	PP	●	req	1 EP- 20 car
3694-0012		anchor rod, Ø 5.5x6.6 mm	1,200 x 6.6 x 5.5 mm	80.0	X	PP	●	req	1 EP- 20 car
3694-0013		anchor rod, Ø 5.5x6.6 mm	1,200 x 6.6 x 5.5 mm	50.0	X	PP	●	req	1 EP- 20 car
3694-002		anchor rod, Ø 5.5x6.6 mm	1,200 x 6.6 x 5.5 mm	25.0	X	PP	●	req	1 EP- 20 car
3694-003		anchor rod, Ø 5.5x6.6 mm	1,200 x 6.6 x 5.5 mm	30.0	X	PP	●	req	1 EP- 20 car
3694-010		anchor rod, Ø 5.5x6.6 mm	1,200 x 6.6 x 5.5 mm	40.0	X	PP	●	req	1 EP- 20 car
3694-019		anchor rod, Ø 5.5x6.6 mm	1,200 x 6.6 x 5.5 mm	60.0	X	PP	●	req	1 EP- 20 pcs
3694-020		anchor rod, Ø 5.5x6.6 mm	1,200 x 6.6 x 5.5 mm	35.0	X	PP	●	req	1 EP- 20 car
* Special fleece width on request/ Spezielle Vliesbreite auf Anfrage; ** Fix lengths on request/ Fixlängen auf Anfrage									
3694-036		ANCHOR ROD, Ø 5.5X6.6 mm	1,200 x 6.6 x 5.5 mm	55.0	X	PP	●	req	1 EP- 20 car
3694-994		ANCHOR ROD, Ø 5.5X6.6 mm	ON ROLLS x 6.6 x 5.5 mm	25.0	X	PP	●	req	1 EP- 20 car
3694-996		ANCHOR ROD, Ø 5.5X6.6 mm	ON ROLLS x 6.6 x 5.5 mm	15.0	X	PP	●	req	1 EP- 20 car
3694-997		ANCHOR ROD, Ø 5.5X6.6 mm	ON ROLLS x 6.6 x 5.5 mm	40.0	X	PP	●	req	1 EP- 20 car
3694-998		ANCHOR ROD, Ø 5.5X6.6 mm	ON ROLLS x 6.6 x 5.5 mm	30.0	X	PP	●	req	1 EP- 20 car