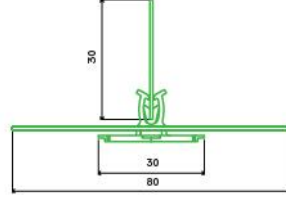


Ürün Kodu / Product Code
4370-036 & 3604 & 5980-0001



4370-036
3604
5980-0001



4370-036 AMBALAJ BİLGİLERİ / PACKING INFORMATION		3604-000 AMBALAJ BİLGİLERİ / PACKING INFORMATION	
AMBALAJ BİRİMİ / PACKAGING UNIT	ADET / PCS	AMBALAJ BİRİMİ / PACKAGING UNIT	ADET / PCS
AMBALAJ MİKTARI / PACKAGING QUANTITY	5000	AMBALAJ MİKTARI / PACKAGING QUANTITY	300
PAKETLEME ŞEKLİ / PACKAGING TYPE	KOLİ / BOX	PAKETLEME ŞEKLİ / PACKAGING TYPE	KOLİ / BOX
3604-915 AMBALAJ BİLGİLERİ / PACKING INFORMATION		5980-0001 AMBALAJ BİLGİLERİ / PACKING INFORMATION	
AMBALAJ BİRİMİ / PACKAGING UNIT	METRE / MTR	AMBALAJ BİRİMİ / PACKAGING UNIT	METRE / MTR
AMBALAJ MİKTARI / PACKAGING QUANTITY	600	AMBALAJ MİKTARI / PACKAGING QUANTITY	200
PAKETLEME ŞEKLİ / PACKAGING TYPE	TOP / ROLL	PAKETLEME ŞEKLİ / PACKAGING TYPE	TOP / ROLL



NO.	NEW NO.	DESCRIPTION	L X B X H	FLANGE	REQUEST	MATERIAL	COLOUR	PU	PQ
4370-036		board 30 x 40 mm	40 x 30.00 x - mm		X	POM	●	req	1 EP - 20 car



NO.	NEW NO.	DESCRIPTION	L X B X H	FLANGE	REQUEST	MATERIAL	COLOUR	PU	PQ
3604		anchor rod, Ø 4.5x5.4 mm	** x 5.4 x 4.5 mm	*	X	PP	●	req	1 EP - 20 car
3604-000		anchor rod, Ø 4.5x5.4 mm	1,200 x 5.4 x 4.5 mm	20.0	X	PP	●	req	1 EP - 20 car
3604-005		anchor rod, Ø 4.5x5.4 mm	1,200 x 5.4 x 4.5 mm	40.0	X	PP	●	req	1 EP - 20 car
3604-006		anchor rod, Ø 4.5x5.4 mm	1,200 x 5.4 x 4.5 mm	15.0	X	PP	●	req	1 EP - 20 car
3604-009		anchor rod, Ø 4.5x5.4 mm	1,200 x 5.4 x 4.5 mm	80.0	X	PP	●	req	1 EP - 20 car
3604-491		anchor rod, with marks/cuts	490 x 5.4 x 4.5 mm	40.0	X	PP	●	req	1 EP - 20 car
3604-915		anchor rod, Ø 4.5x5.4 mm	on rolls x 5.4 x 4.5 mm	15.0	X	PP	●	req	1 EP - 20 car
3604-920		anchor rod, Ø 4.5x5.4 mm	on rolls x 5.4 x 4.5 mm	20.0	X	PP	●	req	1 EP - 20 car
3604-925		anchor rod, Ø 4.5x5.4 mm	on rolls x 5.4 x 4.5 mm	25.0	X	PP	●	req	1 EP - 20 car
3604-955		anchor rod, Ø 4.5x5.4 mm	on rolls x 5.4 x 4.5 mm	55.0	X	PP	●	req	1 EP - 20 car



NO.	NEW NO.	DESCRIPTION	L X B X H	FLANGE	REQUEST	MATERIAL	COLOUR	PU	PQ
5980-0001		with hole punchings for clip 4370-036	on rolls x 80.00 x - mm		X	PP	●	req	1 EP - 30 rls

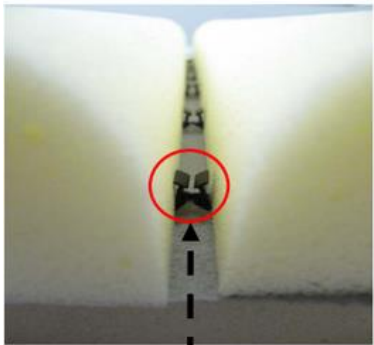
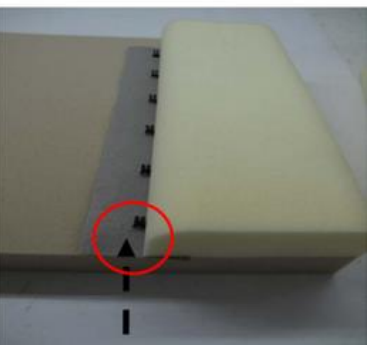
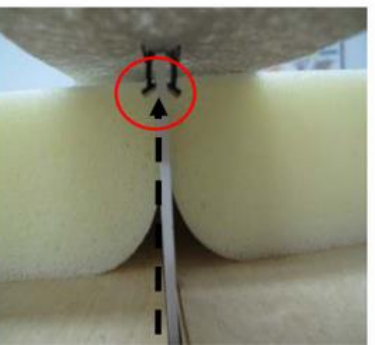
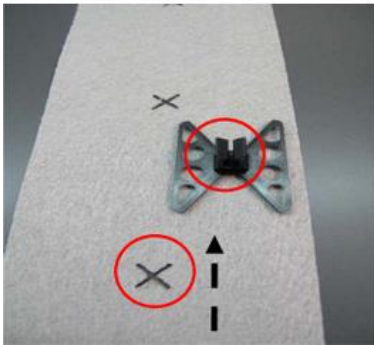
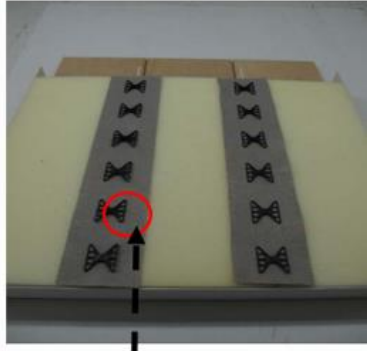
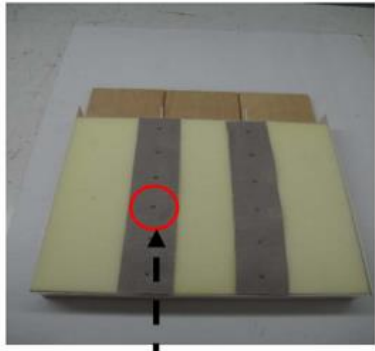
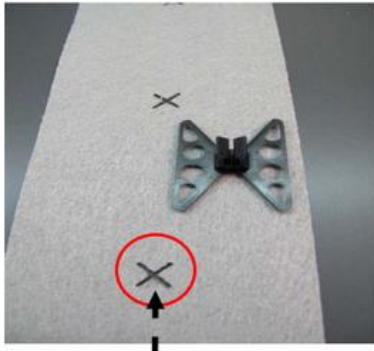
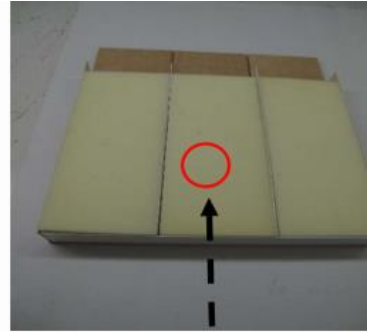
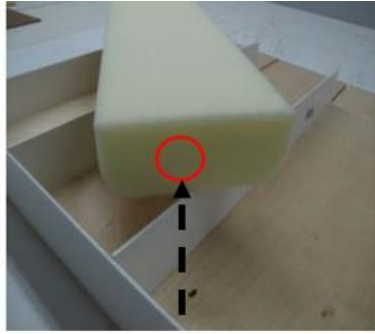
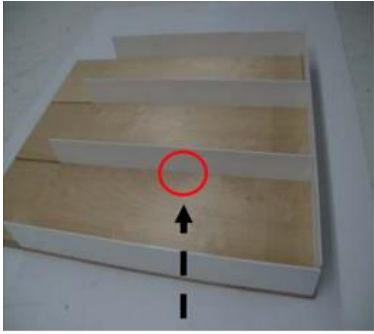
	CLIPFIX			CLIPFIX ^{single}
Anwendungsbereich Area of use	Rückenlehnen Back rests	Sitzflächen Seatings	Form-/Schnittschaum Moulded/cut foam	Formschaum Moulded foam
Nr. No.	4370-032, 4370-033, 4370-034	4370-032, 4370-033, 4370-034	4370-032, 4370-033, 4370-034, 4370-031 + 0956-140, 4370-036 + 0956-140	4370-031, 4370-036
Beispiel Example				
Befestigung Attachment	<ul style="list-style-type: none"> zum Antackern auf Holz- und Metallrahmen geeignet suitable for stapling on wooden and metal frames 	<ul style="list-style-type: none"> zum Nähen auf Vlies for sewing on non-woven 	<ul style="list-style-type: none"> zum Einschäumen oder Kleben in Schnittschaum for foaming or glueing between foam layers 	<ul style="list-style-type: none"> zum Einschäumen for foaming
Anwendung Application	<ul style="list-style-type: none"> für lineare Abheftungen ersetzt Abheftbänder und -schlaufen for straight tuftings substitutes tufting tapes and loops 	<ul style="list-style-type: none"> für lineare Abheftungen optische Trennung von Sitzflächen for straight tuftings optical separation of seating units 	<ul style="list-style-type: none"> für lineare Abheftungen kann schon bei der Konfektion der Sitzpolster eingearbeitet werden for straight tuftings can be incorporated into the seat cushion during manufacture 	<ul style="list-style-type: none"> für verschiedene Clip-abstände für Bogenabheftungen mit Radien bis unter 20 mm for different clip distances for arc tuftings with radiuses down to 20 mm
TieDown Nr. TieDown no.	3694, 3604 3694, 3604	3694, 3604 3694, 3604	3604 3604	

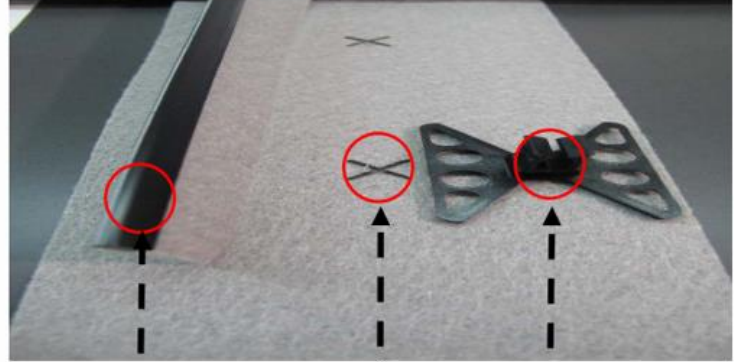
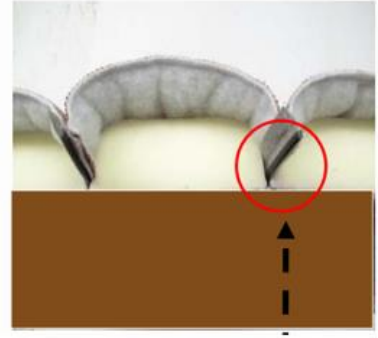
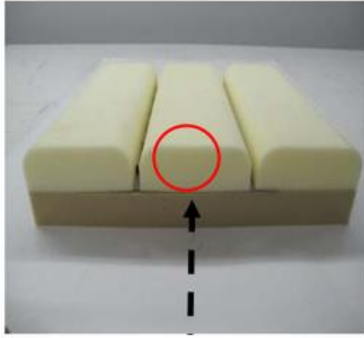
Avantajları / Advantages

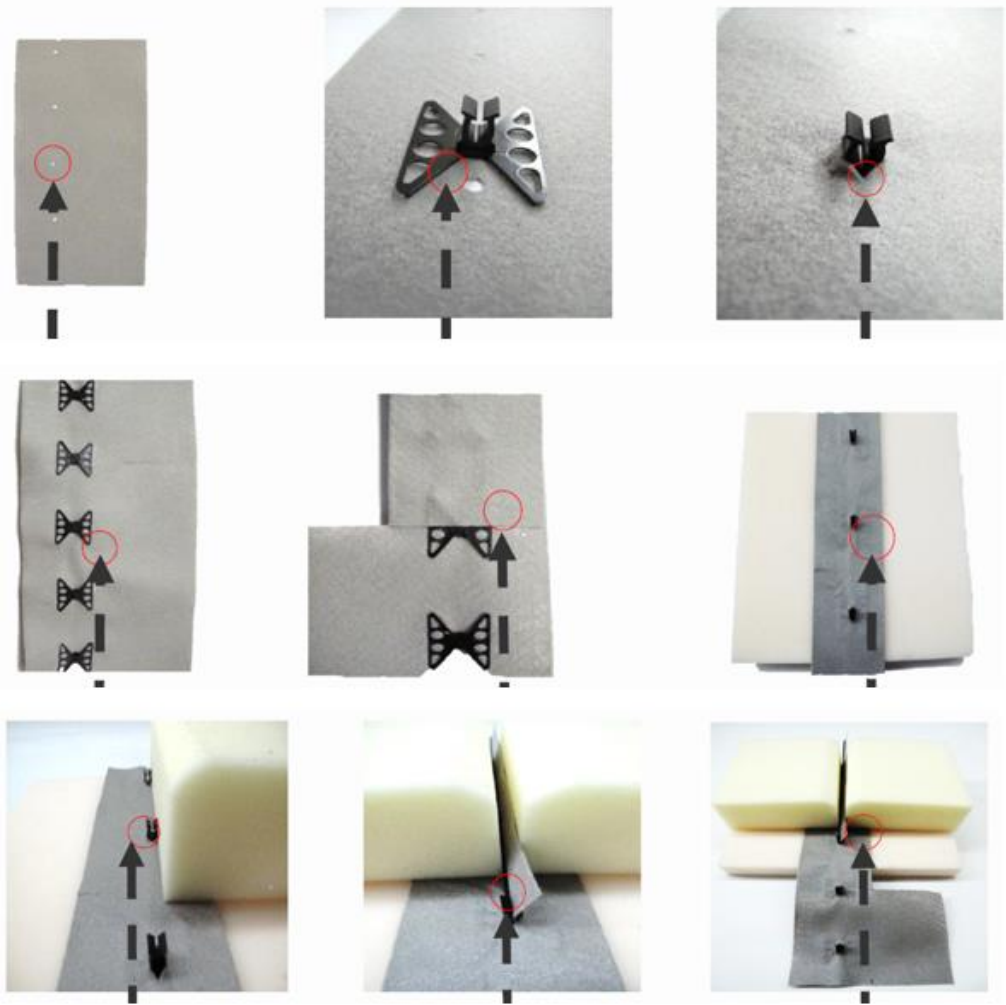
- **Zamandan tasarruf sağlar.**
Saves time.
- **Dokumasız şerit kullanılarak kumaş veya deri tasarrufu sağlar.**
Saves fabric or leather by using a nonwoven strip.
- **Hassas, doğrusal ve hatta derin işleme ve görünüm sağlar**
Provides precise, straight, linear and deep-in-line processing and appearance.
- **'Klik' sesi geldiğinde doğru montaj olduğunu işaret eder.**
When the 'click' sound comes, it indicates that is the correct assembly.

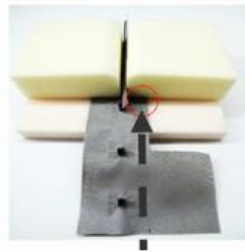
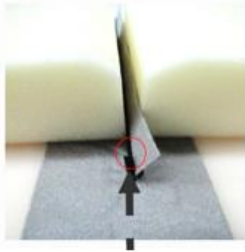
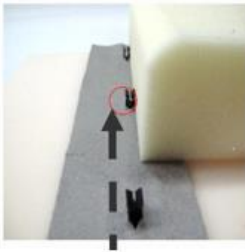
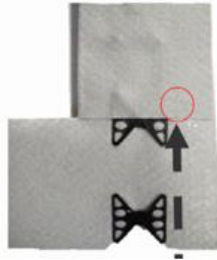
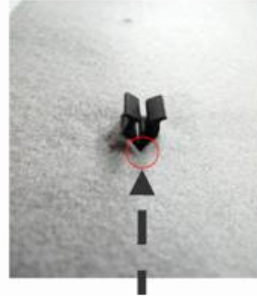
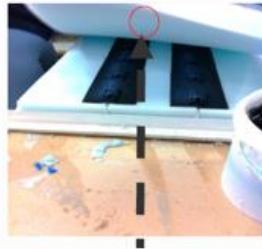
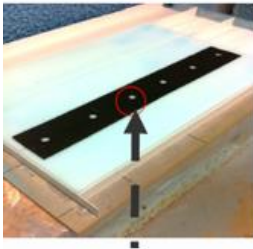
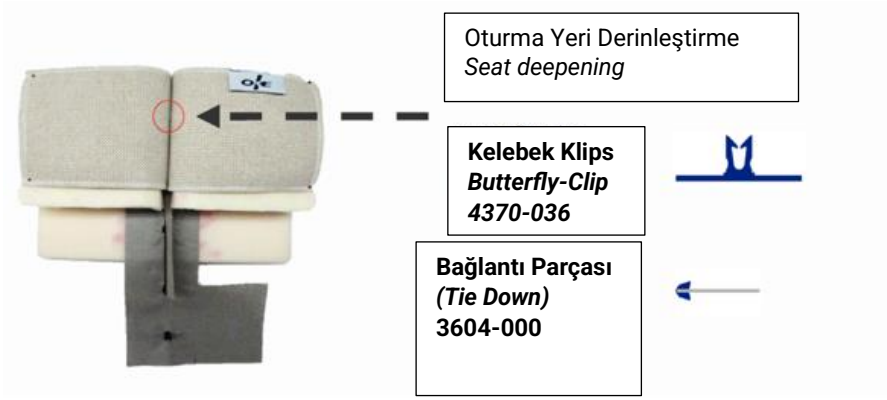


- **Sırt veya oturma yeri eklerinde**
In backrest or seat attachments
- **Süngerli veya yaylı yerlerde**
In foam or spring areas
- **Düz veya yuvarlak hat girintilerinde**
In straight or curved recesses
- **Kolay kilitleme sistemli**
With easy locking system
- **Sabit çizg derinliği sağlar**
Provides consistent line depth









☒ **Siyah bağlantı parçasının ahşap zemin üzerine sabitlenmesi**
Fixing the black tie-down part onto the wooden surface

☒ **Sünger ve kumaşın yerleştirilmesiyle birlikte montaj görünümü**
Mounted appearance by placing the foam and fabric

☒ **Koltuk oturma yüzeyinde uygulamanın genel görünümü**
General appearance of the application on the seating surface

☒ **Kumaş veya destek malzemesindeki montaj noktası**
Mounting point on the fabric or support material

☒ **Kelebek klipsin bağlantı parçasına takılmadan önceki hali**
Butterfly clip appearance before being attached to the tie-down part

☒ **Klipsin yerleştirilmiş ve sabitlenmiş son hali**
Final position of the clip after being installed and fixed

☒ **Kelebek Klipslerin Sabitlenmesi**
Fixing the butterfly clips

☒ **Montaj Noktalarının Hazırlığı**
Preparing the mounting points

☒ **Destek Şeridinin Sünger Üzerine Yerleştirilmesi**
Placing the support strip onto the foam

☒ **İlk Sünger Parçasının Yerleştirilmesi**
Inserting the first piece of foam

☒ **İkinci Sünger Parçasının Yerleştirilmesi**
Inserting the second piece of foam

☒ **İki Sünger Parçasının Birleştirilmiş Hali**
Final assembly of the two foam pieces

Bu sistemle/With this system:

- **Yapıştırıcıya ihtiyaç duyulmadan** kelebek klipslerle sabitleme yapılabilir.
*It can be fixed with butterfly clips **no need for glue.***
- Sünger parçaları **hızlı ve düzenli** şekilde bir araya getiriliyor.
*Foam pieces are connected **quickly and neatly.***
- Ortaya çıkan sonuç **düzgün, sabit ve güvenli bir bağlantı** oluyor.
*The result is a **clean, stable, and secure connection.***