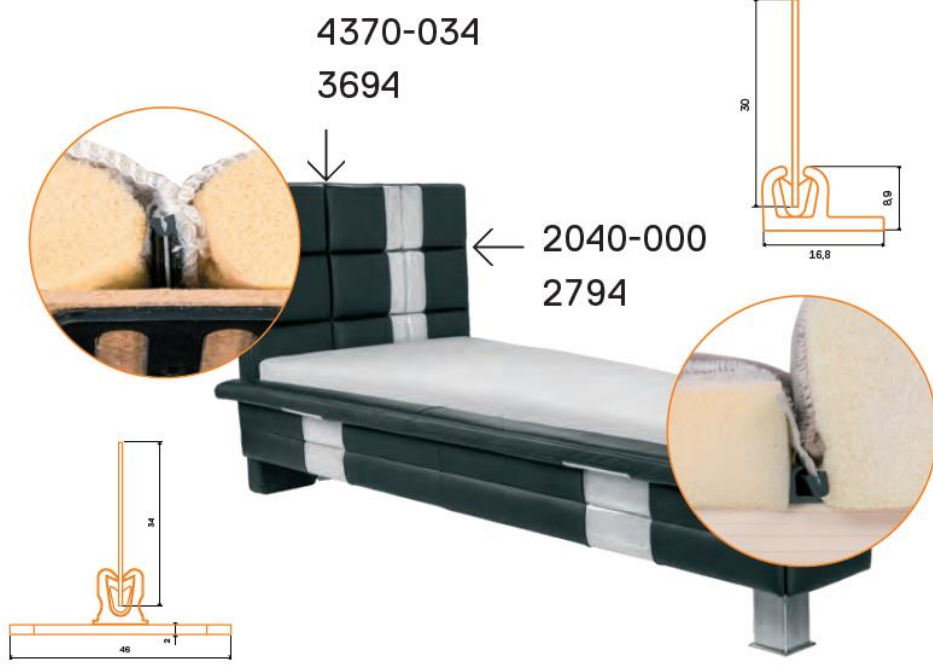


BAŞLIK ÜRÜNLERİ / HEADBOARD PRODUCTS

Ürün Kodu / Product Code

4370-034 & 3694 & 2040 & 2794



4370-034 AMBALAJ BİLGİLERİ / PACKING INFORMATION		3694-000 AMBALAJ BİLGİLERİ / PACKING INFORMATION	
AMBALAJ BİRİMİ / PACKAGING UNIT	ADET / PCS	AMBALAJ BİRİMİ / PACKAGING UNIT	ADET / PCS
AMBALAJ MİKTARI / PACKAGING QUANTITY	40	AMBALAJ MİKTARI / PACKAGING QUANTITY	250
PAKETLEME ŞEKLİ / PACKAGING TYPE	KOLİ / BOX	PAKETLEME ŞEKLİ / PACKAGING TYPE	KOLİ / BOX
3694-996 AMBALAJ BİLGİLERİ / PACKING INFORMATION		2040-000 AMBALAJ BİLGİLERİ / PACKING INFORMATION	
AMBALAJ BİRİMİ / PACKAGING UNIT	METRE / MTR	AMBALAJ BİRİMİ / PACKAGING UNIT	ADET / PCS
AMBALAJ MİKTARI / PACKAGING QUANTITY	500	AMBALAJ MİKTARI / PACKAGING QUANTITY	100
PAKETLEME ŞEKLİ / PACKAGING TYPE	TOP / ROLL	PAKETLEME ŞEKLİ / PACKAGING TYPE	KOLİ / BOX
2794 AMBALAJ BİLGİLERİ / PACKING INFORMATION			
AMBALAJ BİRİMİ / PACKAGING UNIT	METRE / MTR		
AMBALAJ MİKTARI / PACKAGING QUANTITY	200		
PAKETLEME ŞEKLİ / PACKAGING TYPE	TOP / ROLL		



NO.	NEW NO.	DESCRIPTION	L X B X H	FLANGE	REQUEST	MATERIAL	COLOUR	PU	PQ
4370-032		short, distance: 80 mm	400 x 46.00 x 13.6 mm		X	PP	●	req	1 EP - 20 car
4370-033		long, distance: 80 mm	800 x 46.00 x 13.6 mm		X	PP	●	req	1 EP - 20 car
4370-034		extra long, distance: 80 mm	1200 x 46.00 x 13.6 mm		X	PP	●	req	1 EP - 20 car



NO.	NEW NO.	DESCRIPTION	L X B X H	FLANGE	REQUEST	MATERIAL	COLOUR	PU	PQ
3694		anchor rod, Ø 5.5x6.6 mm	** x 6.6 x 5.5 mm	*	X	PP	●	req	1 EP - 20 car
3694-000		anchor rod, Ø 5.5x6.6 mm	1,200 x 6.6 x 5.5 mm	15.0	X	PP	●	req	1 EP - 20 car
3694-001		anchor rod, Ø 5.5x6.6 mm	1,200 x 6.6 x 5.5 mm	20.0	X	PP	●	req	1 EP - 20 car
3694-0012		anchor rod, Ø 5.5x6.6 mm	1,200 x 6.6 x 5.5 mm	80.0	X	PP	●	req	1 EP - 20 car
3694-0013		anchor rod, Ø 5.5x6.6 mm	1,200 x 6.6 x 5.5 mm	50.0	X	PP	●	req	1 EP - 20 car
3694-002		anchor rod, Ø 5.5x6.6 mm	1,200 x 6.6 x 5.5 mm	25.0	X	PP	●	req	1 EP - 20 car
3694-003		anchor rod, Ø 5.5x6.6 mm	1,200 x 6.6 x 5.5 mm	30.0	X	PP	●	req	1 EP - 20 car
3694-010		anchor rod, Ø 5.5x6.6 mm	1,200 x 6.6 x 5.5 mm	40.0	X	PP	●	req	1 EP - 20 car
3694-019		anchor rod, Ø 5.5x6.6 mm	1,200 x 6.6 x 5.5 mm	60.0	X	PP	●	req	1 EP - 20 pcs
3694-020		anchor rod, Ø 5.5x6.6 mm	1,200 x 6.6 x 5.5 mm	35.0	X	PP	●	req	1 EP - 20 car
3694-036		ANCHOR ROD, Ø 5.5x6.6 mm	1,200 x 6.6 x 5.5 mm	55.0	X	PP	●	req	1 EP - 20 car
3694-994		ANCHOR ROD, Ø 5.5x6.6 mm	ON ROLLS x 6.6 x 5.5 mm	25.0	X	PP	●	req	1 EP - 20 car
3694-996		ANCHOR ROD, Ø 5.5x6.6 mm	ON ROLLS x 6.6 x 5.5 mm	15.0	X	PP	●	req	1 EP - 20 car
3694-997		ANCHOR ROD, Ø 5.5x6.6 mm	ON ROLLS x 6.6 x 5.5 mm	40.0	X	PP	●	req	1 EP - 20 car
3694-998		ANCHOR ROD, Ø 5.5x6.6 mm	ON ROLLS x 6.6 x 5.5 mm	30.0	X	PP	●	req	1 EP - 20 car



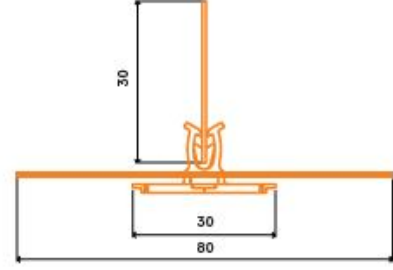
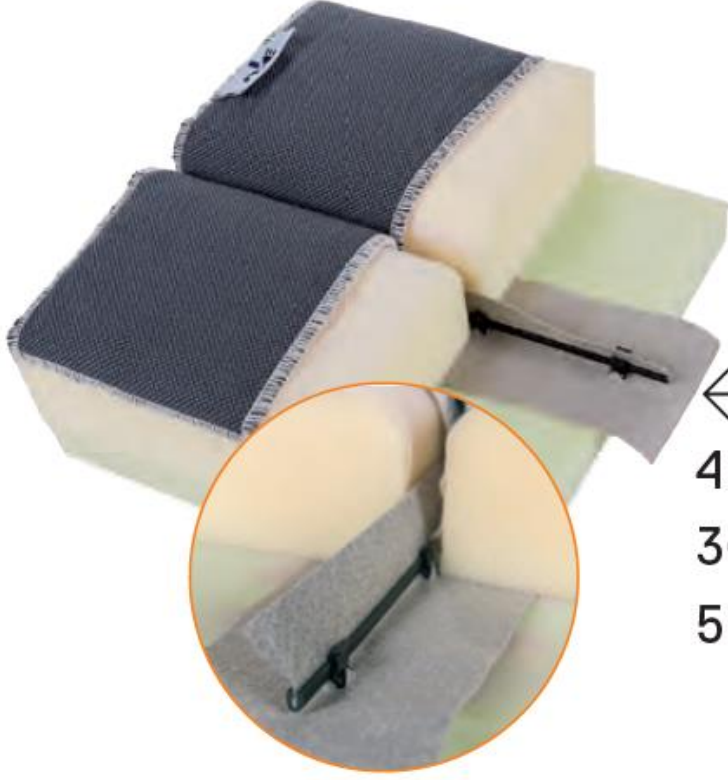
NO.	NEW NO.	DESCRIPTION	L X B X H	FLANGE	REQUEST	MATERIAL	COLOUR	PU	PG
2794		Ø 4x5.1 mm	** x 5.1 x 4.0 mm	*	X	PP	●	req	1 EP- 20 car
2794-915		anchor rod, Ø 4x5.1 mm	on rolls x 5.1 x 4.0 mm	15.0	X	PP	●	req	1 EP- 20 car
2794-920		anchor rod, Ø 4x5.1 mm	on rolls x 5.1 x 4.0 mm	20.0	X	PP	●	req	1 EP- 20 car
2794-925		anchor rod, Ø 4x5.1 mm	on rolls x 5.1 x 4.0 mm	25.0	X	PP	●	req	1 EP- 20 car
2794-930		anchor rod, Ø 4x5.1 mm	on rolls x 5.1 x 4.0 mm	30.0	X	PP	●	req	1 EP- 20 car
2794-940		anchor rod, Ø 4x5.1 mm	on rolls x 5.1 x 4.0 mm	40.0	X	PP	●	req	1 EP- 20 car
2794-970		anchor rod, Ø 4x5.1 mm	on rolls x 5.1 x 4.0 mm	70.0	X	PP	●	req	1 EP- 20 car

	CLIPFIX			CLIPFIX ^{single}
Anwendungsbereich Area of use	Rückenlehnen Back rests	Sitzflächen Seatings	Form-/Schnittschaum Moulded/cut foam	Formschaum Moulded foam
Nr. No.	4370-032, 4370-033, 4370-034	4370-032, 4370-033, 4370-034	4370-032, 4370-033, 4370-034, 4370-031 + 0956-140, 4370-036 + 0956-140	4370-031, 4370-036
Beispiel Example				
Befestigung Attachment	<ul style="list-style-type: none"> • zum Antackern auf Holz- und Metallrahmen geeignet • suitable for stapling on wooden and metal frames 	<ul style="list-style-type: none"> • zum Nähen auf Vlies • for sewing on non-woven 	<ul style="list-style-type: none"> • zum Einschäumen oder Kleben in Schnittschaum • for foaming or glueing between foam layers 	<ul style="list-style-type: none"> • zum Einschäumen • for foaming
Anwendung Application	<ul style="list-style-type: none"> • für lineare Abheftungen • ersetzt Abheftbänder und -schlaufen • for straight tuftings • substitutes tufting tapes and loops 	<ul style="list-style-type: none"> • für lineare Abheftungen • optische Trennung von Sitzflächen • for straight tuftings • optical separation of seating units 	<ul style="list-style-type: none"> • für lineare Abheftungen • kann schon bei der Konfektion der Sitzpolster eingearbeitet werden • for straight tuftings • can be incorporated into the seat cushion during manufacture 	<ul style="list-style-type: none"> • für verschiedene Clip-abstände • für Bogenabheftungen mit Radien bis unter 20 mm • for different clip distances • for arc tuftings with radiuses down to 20 mm
TieDown Nr. TieDown no.	3694, 3604 3694, 3604	3694, 3604 3694, 3604	3604 3604	

Avantajları / Advantages

- **Zamandan tasarruf sağlar.**
Saves time.
- **Dokumasız şerit kullanılarak kumaş veya deri tasarrufu sağlar.**
Saves fabric or leather by using a nonwoven strip.
- **Hassas, doğrusal ve hatta derin işleme ve görünüm sağlar**
Provides precise, straight, linear and deep-in-line processing and appearance.
- **'Klik' sesi geldiğinde doğru montaj olduğunu işaret eder.**
When the 'click' sound comes, it indicates that is the correct assembly.

Ürün Kodu / Product Code
4370-036 & 3604 & 5980-0001



←
4370-036

3604

5980-0001

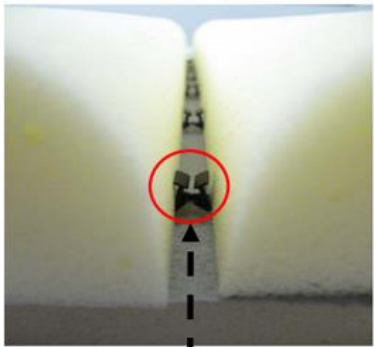
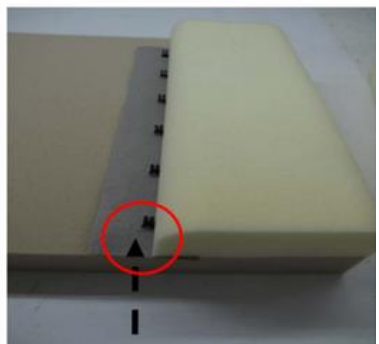
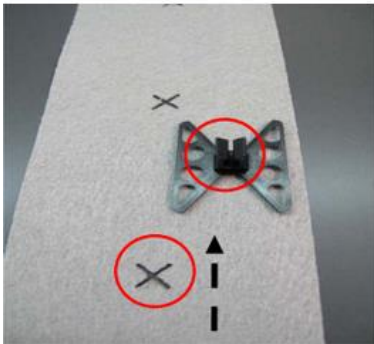
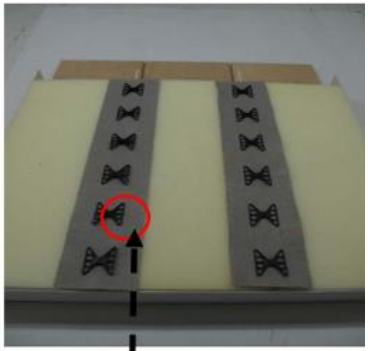
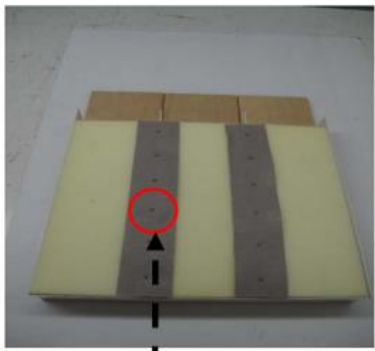
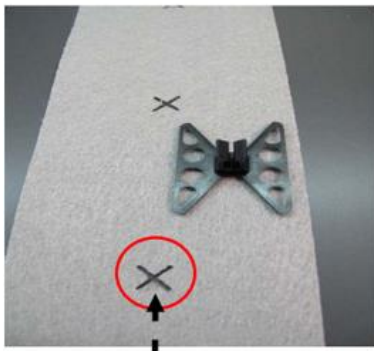
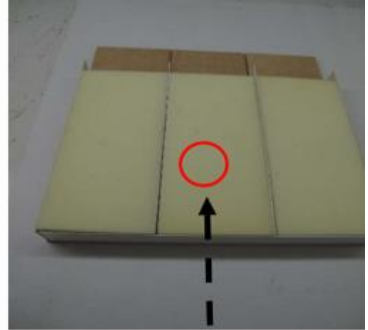
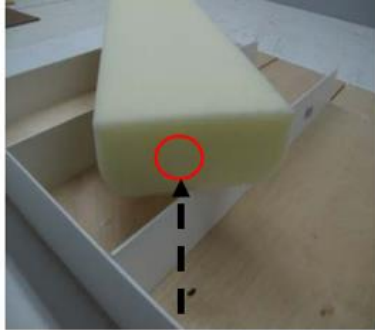
4370-036 AMBALAJ BİLGİLERİ / PACKING INFORMATION		3604-000 AMBALAJ BİLGİLERİ / PACKING INFORMATION	
AMBALAJ BİRİMİ / PACKAGING UNIT	ADET / PCS	AMBALAJ BİRİMİ / PACKAGING UNIT	ADET / PCS
AMBALAJ MİKTARI / PACKAGING QUANTITY	5000	AMBALAJ MİKTARI / PACKAGING QUANTITY	300
PAKETLEME ŞEKLİ / PACKAGING TYPE	KOLİ / BOX	PAKETLEME ŞEKLİ / PACKAGING TYPE	KOLİ / BOX
3604-915 AMBALAJ BİLGİLERİ / PACKING INFORMATION		5980-0001 AMBALAJ BİLGİLERİ / PACKING INFORMATION	
AMBALAJ BİRİMİ / PACKAGING UNIT	METRE / MTR	AMBALAJ BİRİMİ / PACKAGING UNIT	METRE / MTR
AMBALAJ MİKTARI / PACKAGING QUANTITY	600	AMBALAJ MİKTARI / PACKAGING QUANTITY	200
PAKETLEME ŞEKLİ / PACKAGING TYPE	TOP / ROLL	PAKETLEME ŞEKLİ / PACKAGING TYPE	TOP / ROLL

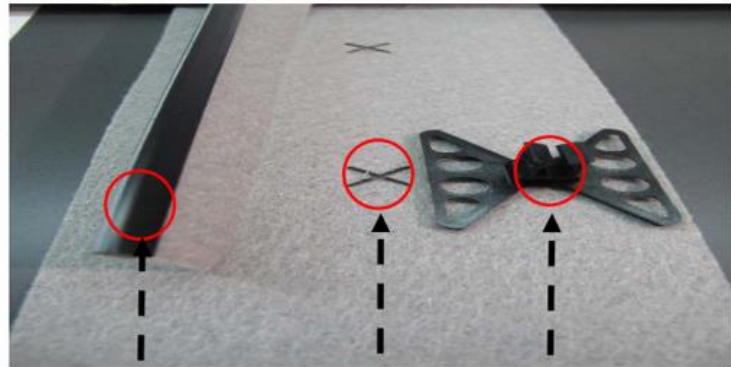
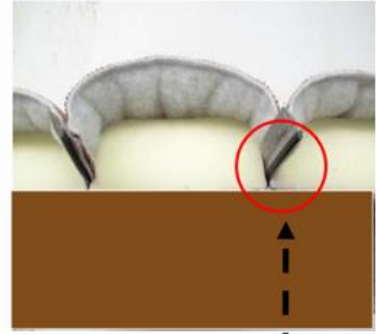
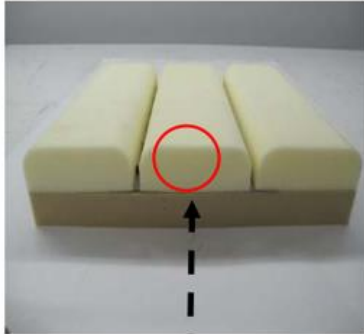


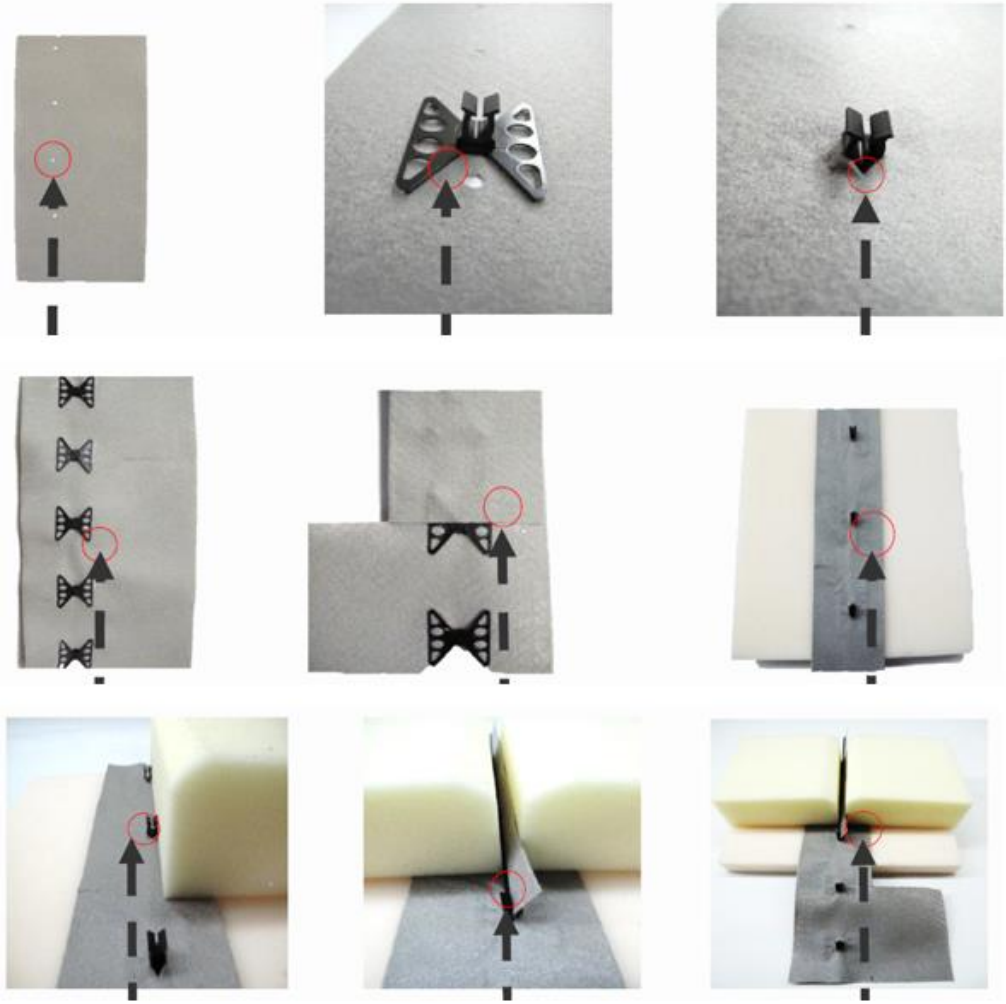
NO.	NEW NO.	DESCRIPTION	L X B X H	FLANGE	REQUEST	MATERIAL	COLOUR	PU	PQ
4370-036		board: 30 x 40 mm	40 x 30.00 x - mm		X	POM	●	req	1 EP - 20 car

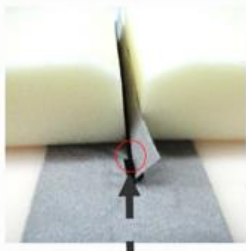
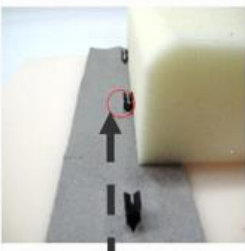
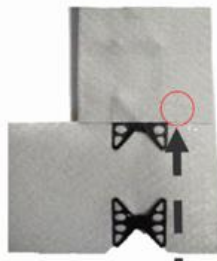
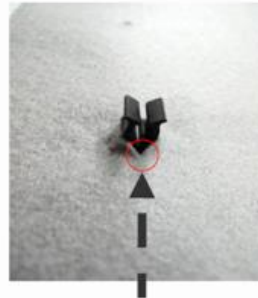
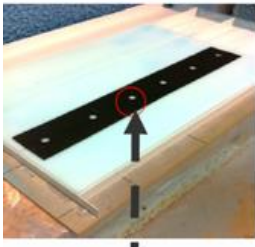
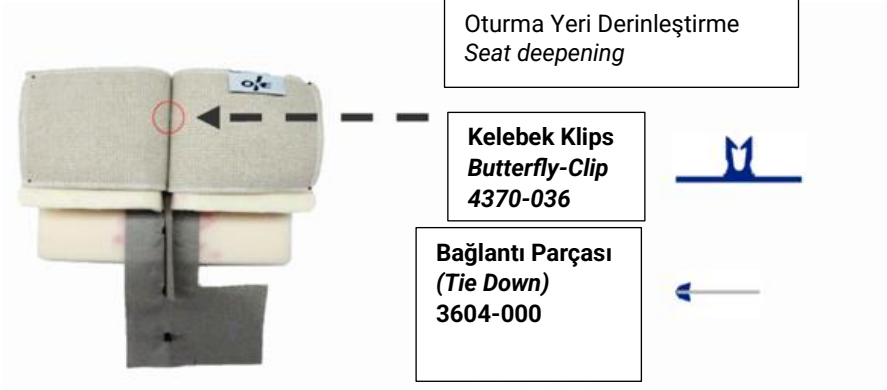


NO.	NEW NO.	DESCRIPTION	L X B X H	FLANGE	REQUEST	MATERIAL	COLOUR	PU	PQ
3604		anchor rod, Ø 4.5x5.4 mm	** x 5.4 x 4.5 mm	*	X	PP	●	req	1 EP - 20 car
3604-000		anchor rod, Ø 4.5x5.4 mm	1,200 x 5.4 x 4.5 mm	20.0	X	PP	●	req	1 EP - 20 car
3604-005		anchor rod, Ø 4.5x5.4 mm	1,200 x 5.4 x 4.5 mm	40.0	X	PP	●	req	1 EP - 20 car
3604-006		anchor rod, Ø 4.5x5.4 mm	1,200 x 5.4 x 4.5 mm	15.0	X	PP	●	req	1 EP - 20 car
3604-009		anchor rod, Ø 4.5x5.4 mm	1,200 x 5.4 x 4.5 mm	80.0	X	PP	●	req	1 EP - 20 car
3604-491		anchor rod, with marks/cuts	490 x 5.4 x 4.5 mm	40.0	X	PP	●	req	1 EP - 20 car
3604-915		anchor rod, Ø 4.5x5.4 mm	on rolls x 5.4 x 4.5 mm	15.0	X	PP	●	req	1 EP - 20 car
3604-920		anchor rod, Ø 4.5x5.4 mm	on rolls x 5.4 x 4.5 mm	20.0	X	PP	●	req	1 EP - 20 car
3604-925		anchor rod, Ø 4.5x5.4 mm	on rolls x 5.4 x 4.5 mm	25.0	X	PP	●	req	1 EP - 20 car
3604-955		anchor rod, Ø 4.5x5.4 mm	on rolls x 5.4 x 4.5 mm	55.0	X	PP	●	req	1 EP - 20 car









☒ **Siyah bağlantı parçasının ahşap zemin üzerine sabitlenmesi**
Fixing the black tie-down part onto the wooden surface

☒ **Sünger ve kumaşın yerleştirilmesiyle birlikte montaj görünümü**
Mounted appearance by placing the foam and fabric

☒ **Koltuk oturma yüzeyinde uygulamanın genel görünümü**
General appearance of the application on the seating surface

☒ **Kumaş veya destek malzemesindeki montaj noktası**
Mounting point on the fabric or support material

☒ **Kelebek klipsin bağlantı parçasına takılmadan önceki hali**
Butterfly clip appearance before being attached to the tie-down part

☒ **Klipsin yerleştirilmiş ve sabitlenmiş son hali**
Final position of the clip after being installed and fixed

☒ **Kelebek Klipslerin Sabitlenmesi**
Fixing the butterfly clips

☒ **Montaj Noktalarının Hazırlığı**
Preparing the mounting points

☒ **Destek Şeridinin Sünger Üzerine Yerleştirilmesi**
Placing the support strip onto the foam

☒ **İlk Sünger Parçasının Yerleştirilmesi**
Inserting the first piece of foam

☒ **İkinci Sünger Parçasının Yerleştirilmesi**
Inserting the second piece of foam

☒ **İki Sünger Parçasının Birleştirilmiş Hali**
Final assembly of the two foam pieces

Bu sistemle/With this system:

- **Yapıştırıcıya ihtiyaç duyulmadan** kelebek klipslerle sabitleme yapılabilir.
*It can be fixed with butterfly clips **no need for glue.***
- Sünger parçaları **hızlı ve düzenli** şekilde bir araya getiriliyor.
*Foam pieces are connected **quickly and neatly.***
- Ortaya çıkan sonuç **düzgün, sabit ve güvenli bir bağlantı** oluyor.
*The result is a **clean, stable, and secure connection***

