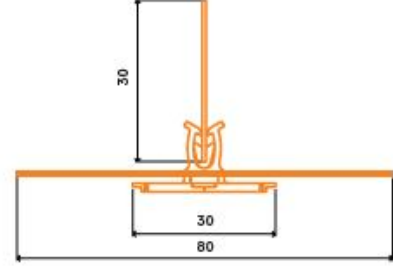
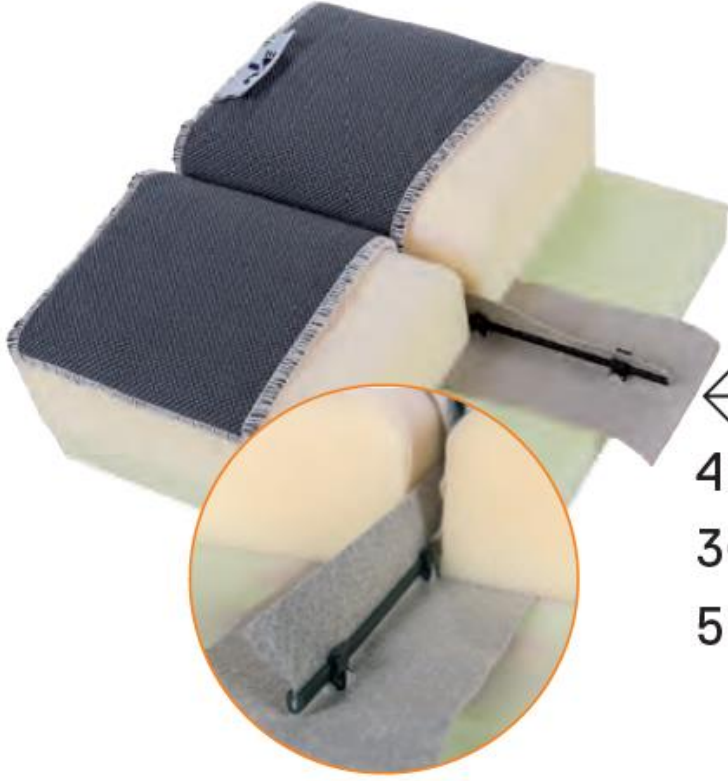


Ürün Kodu / Product Code
4370-036 & 3604 & 5980-0001



←
4370-036
3604
5980-0001

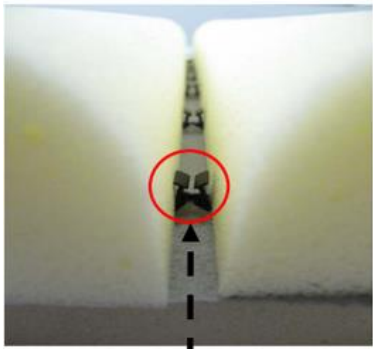
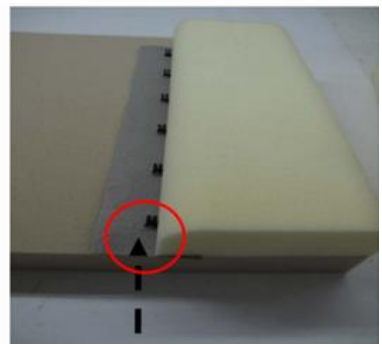
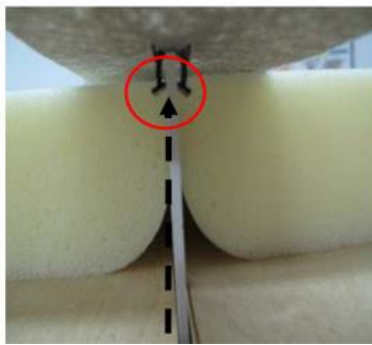
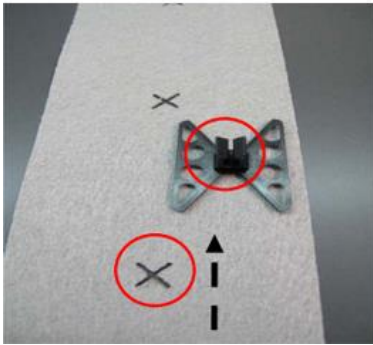
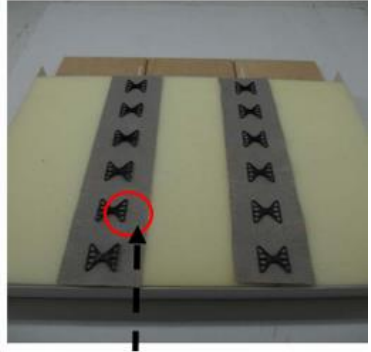
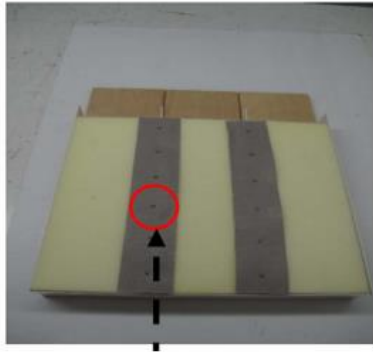
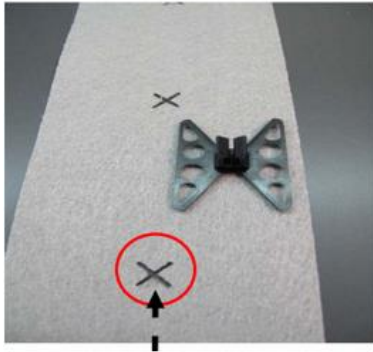
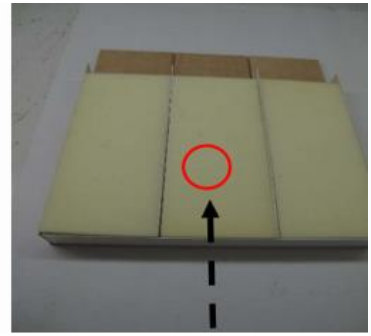
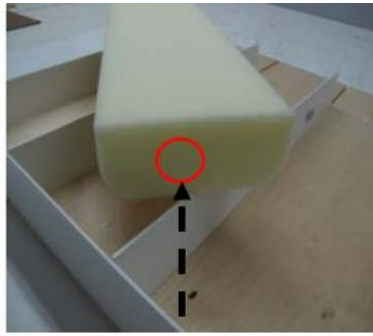
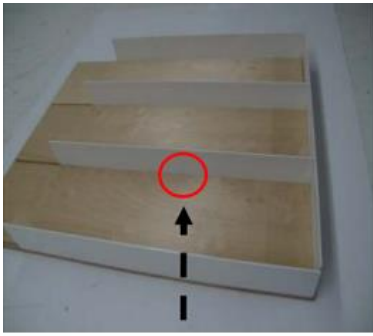
4370-036 AMBALAJ BİLGİLERİ / PACKING INFORMATION		3604-000 AMBALAJ BİLGİLERİ / PACKING INFORMATION	
AMBALAJ BİRİMİ / PACKAGING UNIT	ADET / PCS	AMBALAJ BİRİMİ / PACKAGING UNIT	ADET / PCS
AMBALAJ MİKTARI / PACKAGING QUANTITY	5000	AMBALAJ MİKTARI / PACKAGING QUANTITY	300
PAKETLEME ŞEKLİ / PACKAGING TYPE	KOLİ / BOX	PAKETLEME ŞEKLİ / PACKAGING TYPE	KOLİ / BOX
3604-915 AMBALAJ BİLGİLERİ / PACKING INFORMATION		5980-0001 AMBALAJ BİLGİLERİ / PACKING INFORMATION	
AMBALAJ BİRİMİ / PACKAGING UNIT	METRE / MTR	AMBALAJ BİRİMİ / PACKAGING UNIT	METRE / MTR
AMBALAJ MİKTARI / PACKAGING QUANTITY	600	AMBALAJ MİKTARI / PACKAGING QUANTITY	200
PAKETLEME ŞEKLİ / PACKAGING TYPE	TOP / ROLL	PAKETLEME ŞEKLİ / PACKAGING TYPE	TOP / ROLL

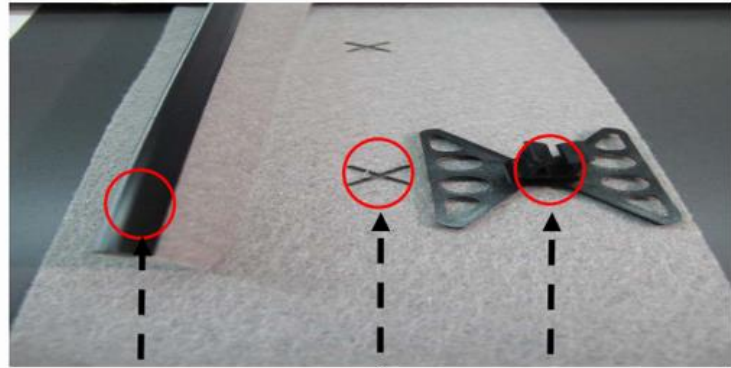
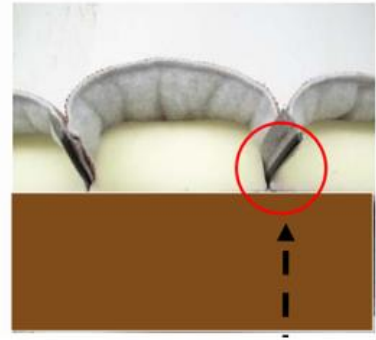
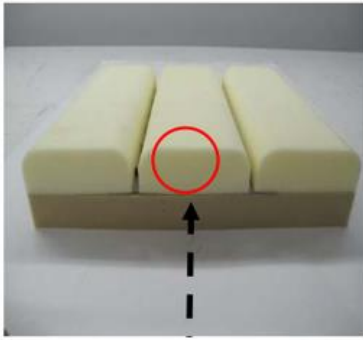


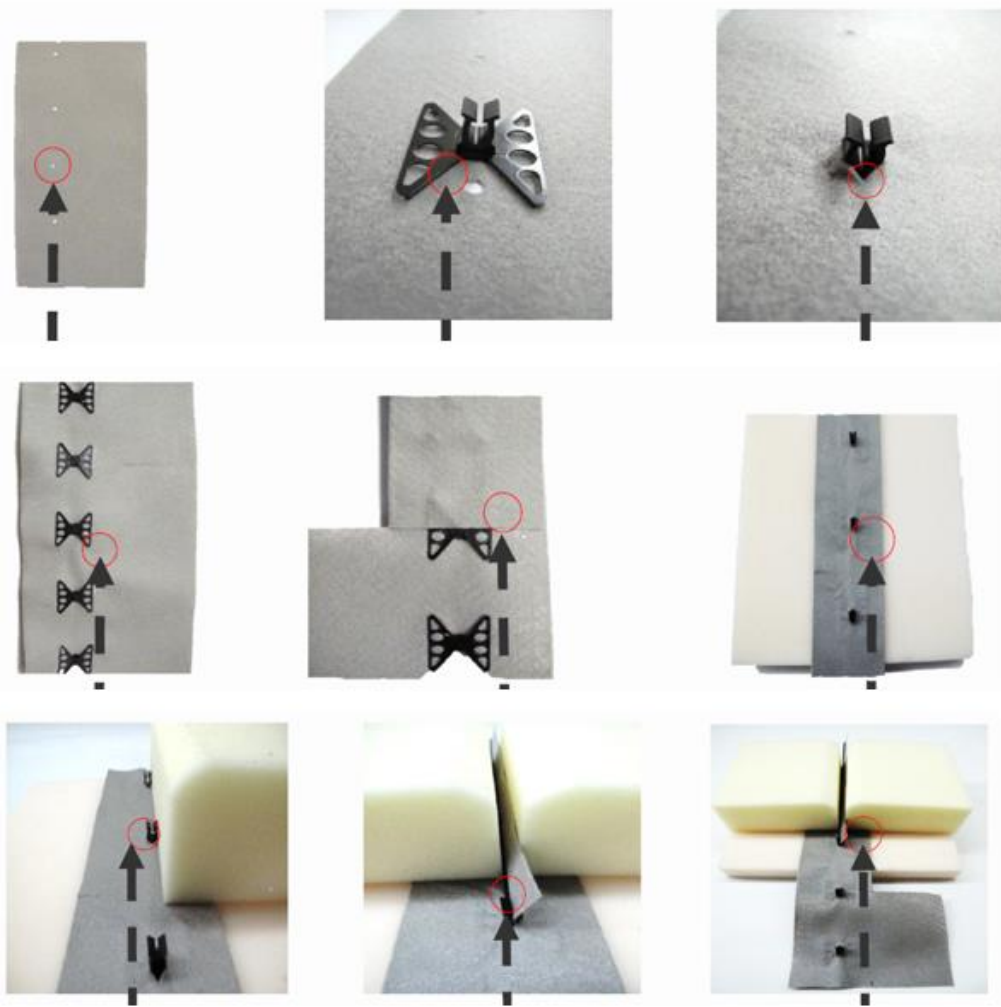
NO.	NEW NO.	DESCRIPTION	L X B X H	FLANGE	REQUEST	MATERIAL	COLOUR	PU	PQ
4370-038		board 30 x 40 mm	40 x 30.00 x - mm		X	POM	●	req	1 EP - 20 car

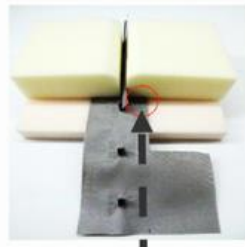
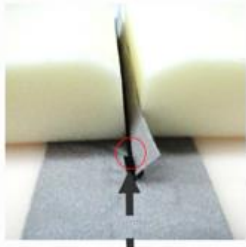
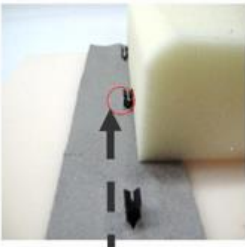
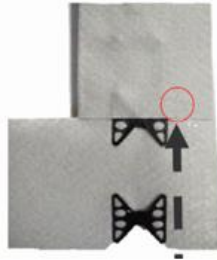
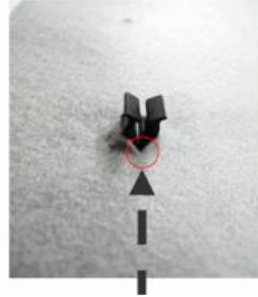
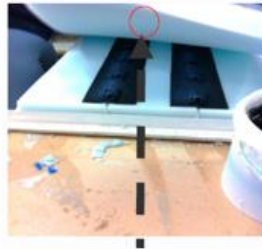
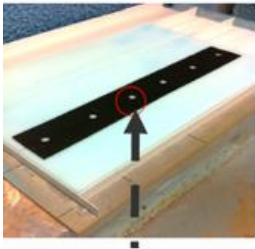
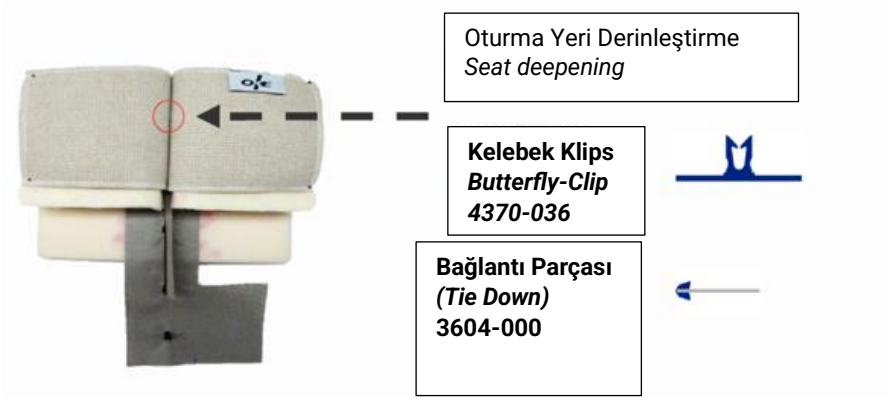


NO.	NEW NO.	DESCRIPTION	L X B X H	FLANGE	REQUEST	MATERIAL	COLOUR	PU	PQ
3604		anchor rod, Ø 4.5x5.4 mm	** x 5.4 x 4.5 mm	*	X	PP	●	req	1 EP - 20 car
3604-000		anchor rod, Ø 4.5x5.4 mm	1,200 x 5.4 x 4.5 mm	20.0	X	PP	●	req	1 EP - 20 car
3604-005		anchor rod, Ø 4.5x5.4 mm	1,200 x 5.4 x 4.5 mm	40.0	X	PP	●	req	1 EP - 20 car
3604-006		anchor rod, Ø 4.5x5.4 mm	1,200 x 5.4 x 4.5 mm	15.0	X	PP	●	req	1 EP - 20 car
3604-009		anchor rod, Ø 4.5x5.4 mm	1,200 x 5.4 x 4.5 mm	80.0	X	PP	●	req	1 EP - 20 car
3604-491		anchor rod, with marks/buts	490 x 5.4 x 4.5 mm	40.0	X	PP	●	req	1 EP - 20 car
3604-915		anchor rod, Ø 4.5x5.4 mm	on rolls x 5.4 x 4.5 mm	15.0	X	PP	●	req	1 EP - 20 car
3604-920		anchor rod, Ø 4.5x5.4 mm	on rolls x 5.4 x 4.5 mm	20.0	X	PP	●	req	1 EP - 20 car
3604-925		anchor rod, Ø 4.5x5.4 mm	on rolls x 5.4 x 4.5 mm	25.0	X	PP	●	req	1 EP - 20 car
3604-955		anchor rod, Ø 4.5x5.4 mm	on rolls x 5.4 x 4.5 mm	55.0	X	PP	●	req	1 EP - 20 car









☒ **Siyah bağlantı parçasının ahşap zemin üzerine sabitlenmesi**
Fixing the black tie-down part onto the wooden surface

☒ **Sünger ve kumaşın yerleştirilmesiyle birlikte montaj görünümü**
Mounted appearance by placing the foam and fabric

☒ **Koltuk oturma yüzeyinde uygulamanın genel görünümü**
General appearance of the application on the seating surface

☒ **Kumaş veya destek malzemesindeki montaj noktası**
Mounting point on the fabric or support material

☒ **Kelebek klipsin bağlantı parçasına takılmadan önceki hali**
Butterfly clip appearance before being attached to the tie-down part

☒ **Klipsin yerleştirilmiş ve sabitlenmiş son hali**
Final position of the clip after being installed and fixed

☒ **Kelebek Klipslerin Sabitlenmesi**
Fixing the butterfly clips

☒ **Montaj Noktalarının Hazırlığı**
Preparing the mounting points

☒ **Destek Şeridinin Sünger Üzerine Yerleştirilmesi**
Placing the support strip onto the foam

☒ **İlk Sünger Parçasının Yerleştirilmesi**
Inserting the first piece of foam

☒ **İkinci Sünger Parçasının Yerleştirilmesi**
Inserting the second piece of foam

☒ **İki Sünger Parçasının Birleştirilmiş Hali**
Final assembly of the two foam pieces

Bu sistemle/With this system:

- **Yapıştırıcıya ihtiyaç duyulmadan** kelebek klipslerle sabitleme yapılabilir.
*It can be fixed with butterfly clips **no need for glue**.*
- Sünger parçaları **hızlı ve düzenli** şekilde bir araya getiriliyor.
*Foam pieces are connected **quickly and neatly**.*
- Ortaya çıkan sonuç **düzgün, sabit ve güvenli bir bağlantı** oluyor.
*The result is a **clean, stable, and secure connection***